

Three Year Strategic Planning Summary 2011 – 2013

Bettendorf Presbyterian Church

September 12, 2010

Agenda

- Mission Statement
- Three Focus Areas
 - Growing God's Kingdom through Worship
 - Growing God's Kingdom through Mission
 - Growing God's Kingdom through Ministry

Mission Statement

Reaching Out to Grow God's Kingdom
through Worship, Mission, and Ministry.

Growing God's Kingdom through Worship



Multi-generational
Worship Steering
Team.

Goal:
Enhance variety &
broaden participation
in worship



Music Component of
Worship.

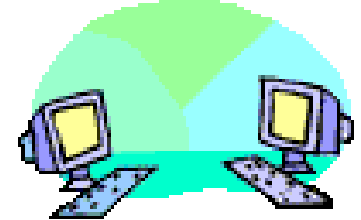
Goal:
Enhance variety of
music offerings.
Include symphonic,
praise band,
traditional choir, and
children's choir.



GENTLEMEN, I BELIEVE THERE IS
AN IMPOSTOR IN OUR CONVERSATION

Create a relaxed environment for
fellowship, praise, study, & worship.

Goal: Leverage on strengths of both
services. Increase multi-
generational participation.
Seamlessly incorporate technology.
Cultivate future church leaders
through participation and planning.



Growing God's Kingdom through Mission

Grow Christ church by sponsoring activities which allow people to explore and learn about each other and their faith.



Walks / Runs
Growth Groups
Etc.

More events /
increase
participation

**Our organization is
looked upon as one
everyone wants to
be part of.**

Youth involvement:
Mission Trips –
ie. Pine Ridge
Day Trips
•Ski
•Video game nights
•Movie nights

More events /
increase participation

**Youth want to attend
and bring friends.**

Community involvement:
Needy Tree
Praise on the River
Identify community
needs such as child care.
ETC.

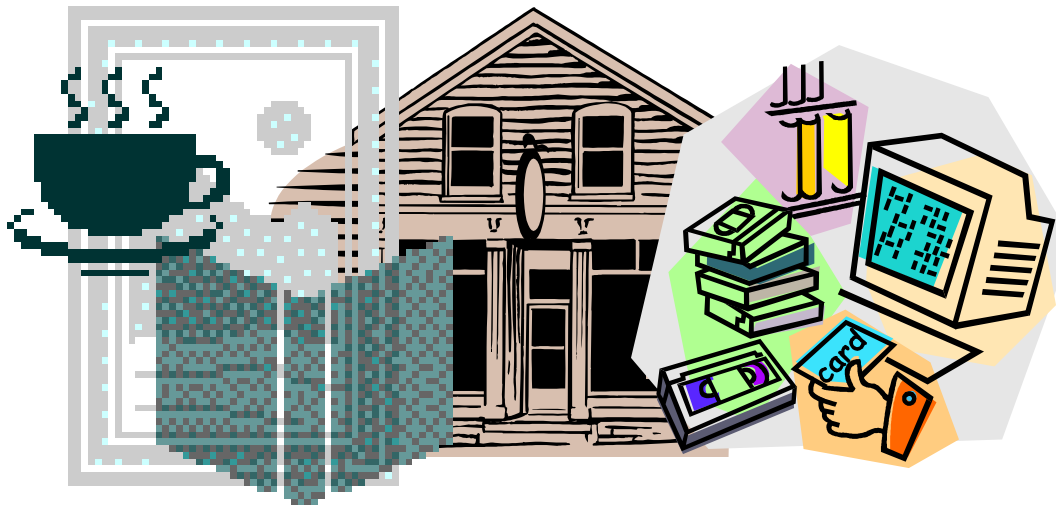
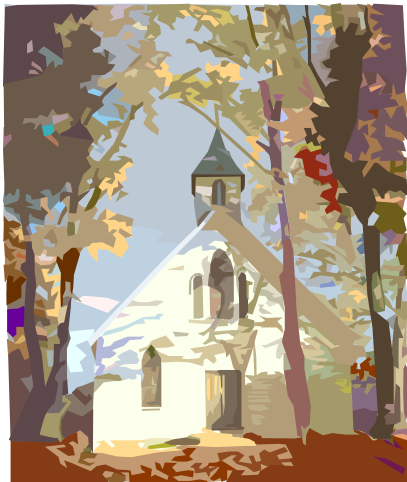
**Increase community
participation**

Adult involvement:
•Mission Trips like
Rebuild efforts like
Oakville, Cedar
Rapids, New Orleans,
& Day trips
•Visit other churches
•Invite friends /
neighbors to church
•Social events

**Increase Adult
Participation**

Growing God's Kingdom through Mission

Grow Christ church by sponsoring places where people can meet to explore and learn about each other and their faith.



Maintain BPC

Provide a place to

- Worship
- Meet
- Share with Community

Multi Site Venue:

Alternative site:

A Starbucks theme? Provide location for Christians and non Christians to meet and build relationship.

The Location could provide

- Relaxed meeting place for youth
- Relaxed meeting place for adults
- Share with Community
- Food Pantry / Shelter
- Game Room / etc.

BPC's Social Worker

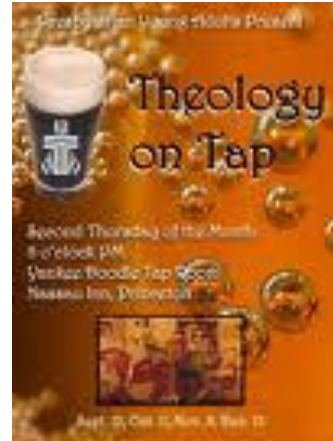
- Manage new site
- Coordinate with community agencies
- Coordinate community activities
- Sponsor youth & adult activities
- Act and grow Christ church

Growing God's Kingdom through Ministry



Youth Program

Goal:
A youth program that create opportunities for mission. Bible study and fellowship supported by strong parental involvement.



Young Adult Program

Goal:
Create a program for young adults. It would offer a means for people in this age group to come together and move forward in their faith through fellowship.



Programs for All Ages (Youth – Seniors)

Goal:
A small group ministry where 75% of worship attendees participate in regular study other than worship and Sunday School.



Friendly Congregation with connections to the community

Goal:
Create an environment that welcomes guests and helps them connect. Foster continued use of our facility by the community.